

FLAT WASHER

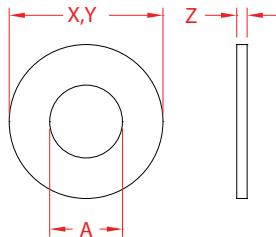
316 STAINLESS STEEL



Import



Stamped



ITEM	SIZE	A	QTY	X (height)	Y (length)	Z (width)	WT (lb)	PACKAGING TYPE	EACH (qty)	INNER (qty)	CARTON (qty)	UPC
INDIVIDUAL												
P0113-WA04	#8 (1/8")	0.13"	1	0.32"	0.32"	0.03"	0.0008	POLYBAG	1	10	1000	791506021063
SMALL PACKS - POLYBAG												
P0113-WA04-10	#8 (1/8")	0.13"	10	0.32"	0.32"	0.03"	0.008	POLYBAG	1	1	10	791506113188
P0113-WA05-10	#10 (3/16")	0.21"	10	0.43"	0.43"	0.03"	0.010	POLYBAG	1	1	10	791506113157
P0113-WA07-4	#14 (1/4")	0.29"	4	0.62"	0.62"	0.05"	0.014	POLYBAG	1	1	100	791506113164
P0113-WA08-3	#20 (5/16")	0.36"	3	0.75"	0.75"	0.05"	0.014	POLYBAG	1	1	100	791506113171

NOTE:
316 STAINLESS STEEL FOR MAXIMUM CORROSION RESISTANCE. COMPATIBLE FASTENERS AND NUTS ARE AVAILABLE.
ALL DIMENSIONS ARE NOMINAL (+/- 3%) AND ARE SUBJECT TO CHANGE WITHOUT NOTICE.